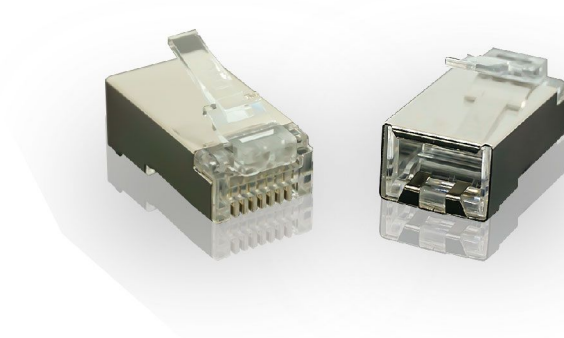


DTC SHIELDED CONNECTOR RJ-45



DESCRIPTION

- We offer Cat. 6 modular plugs in standard configuration terminate modular cords for patching or Work area application , modular plugs can be terminated to the exact cable length in order to Maintain a nearer, more organized installment , the plugs terminate twist pair cable with 26-22 AWG solid all plugs contracts have 50 micron inches of gold plating over nickel

APPLICATION

- 6-50 micron RJ-45 staggered gold plated connectors
- Fitted with strain relief boots
- Meet or exceed the requirement in the Cat 6 T568 A and T568 B (Telecommunication requirement)
- 100% Tested Wiring Sequence and Continuity
- Excellent Attenuation and Crosstalk Characteristics
- Connector with staggered pin configuration to limit cross talk
- Exceed Category Cat. 6 requirement
- Contacts are nickel plated, phosphor bronze with 6 to 50u" gold plate

DTC SHIELDED CONNECTOR CAT 6A



DESCRIPTION

- We offer Cat. 6A connector plugs in standard configuration terminate patchcords for patching or Work area application , connector plugs can be terminated to the exact cable length in order to Maintain a nearer, more organized installment , the plugs terminate twist pair cable with 26-22 AWG solid all plugs contracts have 50 micron inches of gold plating over nickel

APPLICATION

- 6-50 micron RJ-45 staggered gold plated connectors
- Fitted with strain relief boots
- Meet or exceed the requirement in the Cat 6A T568 A and T568 B (Telecommunication requirement)
- 100% Tested Wiring Sequence and Continuity
- Excellent Attenuation and Crosstalk Characteristics
- Connector with staggered pin configuration to limit cross talk
- Exceed Category Cat. 6A requirement
- Contacts are nickel plated, phosphor bronze with 6 to 50u" gold plate

DTC UNSHIELDED CONNECTOR RJ-45



DESCRIPTION

- We offer Cat. 5E Connector plugs in standard configuration terminate modular cords for patching or Work area application , connector plugs can be terminated to the exact cable length in order to Maintain a nearer, more organized installment , the plugs terminate twist pair cable with 26-22 AWG solid all plugs contracts have 50 micron inches of gold plating over nickel

APPLICATION

- 6-50 micron RJ-45 staggered gold plated connectors
- Fitted with strain relief & transparent boots
- Meet or exceed the requirement in the Cat 5e & 6 T568 A and T568 B (Telecommunication requirement)
- 100% Tested Wiring Sequence and Continuity
- Excellent Attenuation and Crosstalk Characteristics
- Connector with staggered pin configuration to limit cross talk
- Exceed Category Cat. 5E requirement
- Contacts are nickel plated, phosphor bronze with 6 to 50u" gold plate